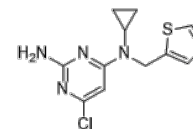


Product Name : LRE1
Cat. No. : PC-60891
CAS No. : 1252362-53-0
Molecular Formula : C₁₂H₁₃ClN₄S
Molecular Weight : 280.77
Target : Adenylate Cyclase
Solubility : 10 mM in DMSO



CAS: 1252362-53-0

Biological Activity

LRE1 (RU-0204277) is a potent, specific and allosteric **soluble adenylate cyclase** (sAC) inhibitor with IC₅₀ of 3.3 μM in RF-MSS assays.

LRE1 does not inhibit other transmembrane adenylate cyclases (tmACs) including tmACs I, II, V, VIII and IX at 50 μM.

LRE1 binds to the bicarbonate activator binding site and inhibited sAC via a unique allosteric mechanism.

LRE1 inhibits cAMP accumulation in 4-4 cells with an IC₅₀ of 11 μM, and is non-toxic and does not uncouple mitochondria.

References

Ramos-Espiritu L, et al. *Nat Chem Biol*. 2016 Oct;12(10):838-44.

Caution: Product has not been fully validated for medical applications. Lab Use Only!

E-mail: tech@probechem.com